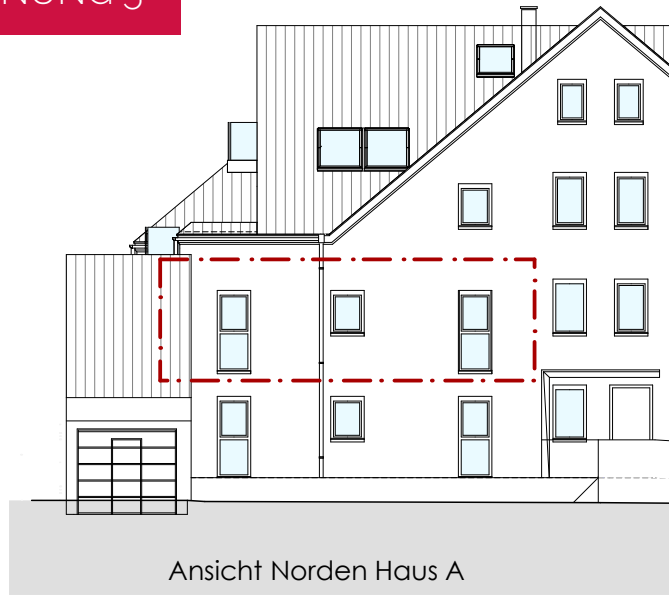
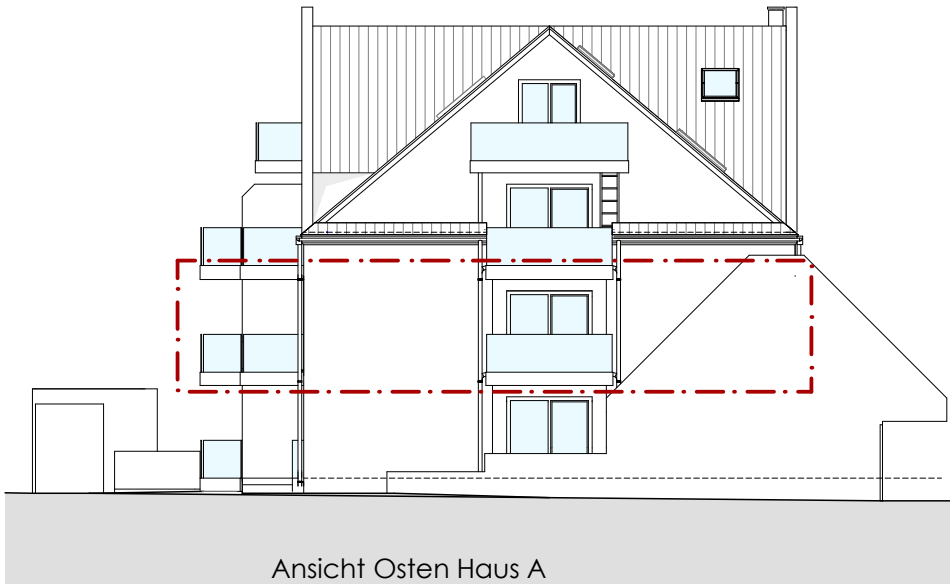


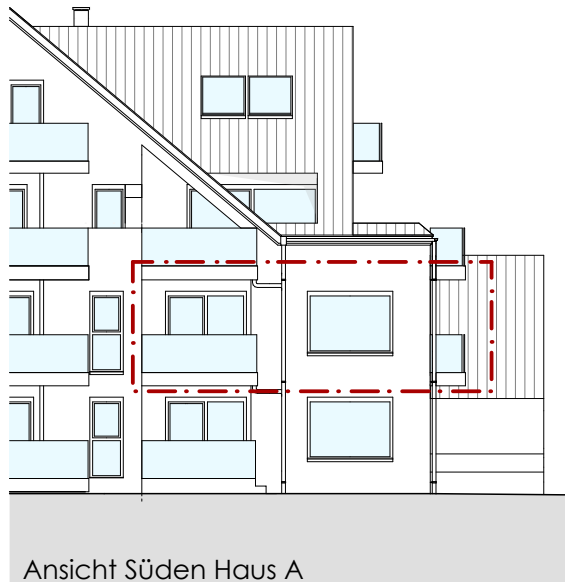
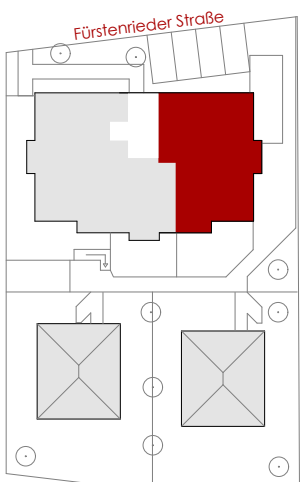
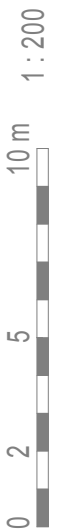
ANSICHTEN - WOHNUNG 5



Ansicht Norden Haus A



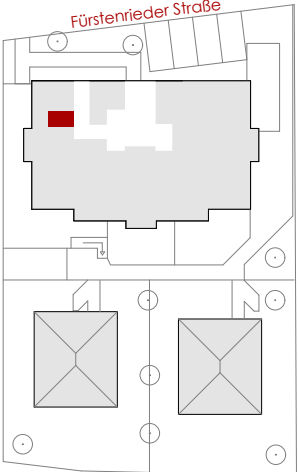
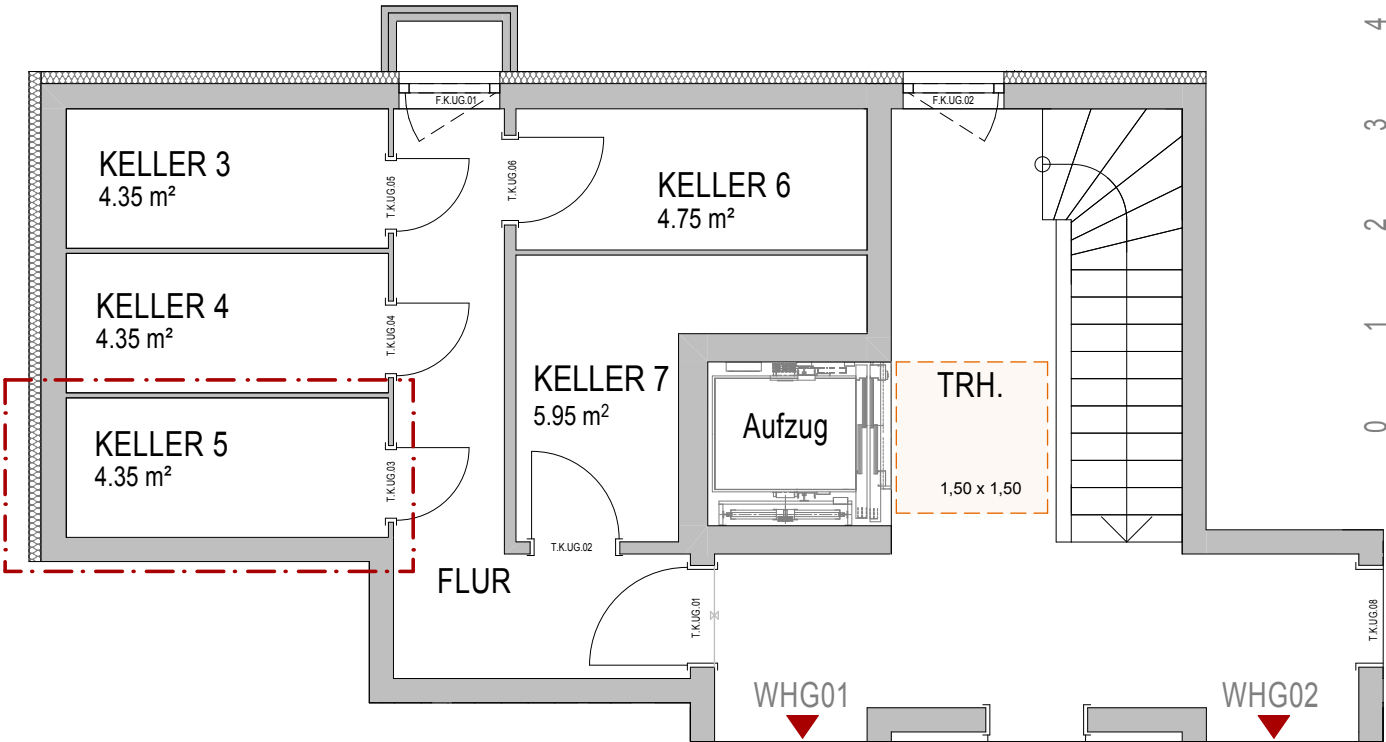
Ansicht Osten Haus A



Ansicht Süden Haus A



Berechnung der Wohnfläche (WFL) nach Wohnflächenverordnung WoFIV:2004-01 | ( )=Fläche Zubehörräume (FI-ZBR)



UNTERGESCHOSS (WHG 05)

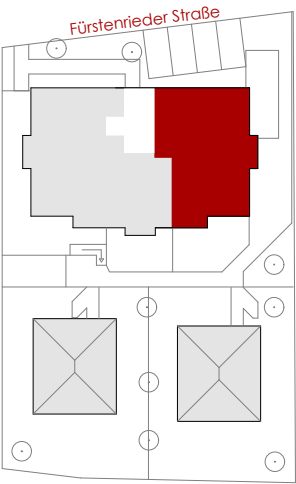
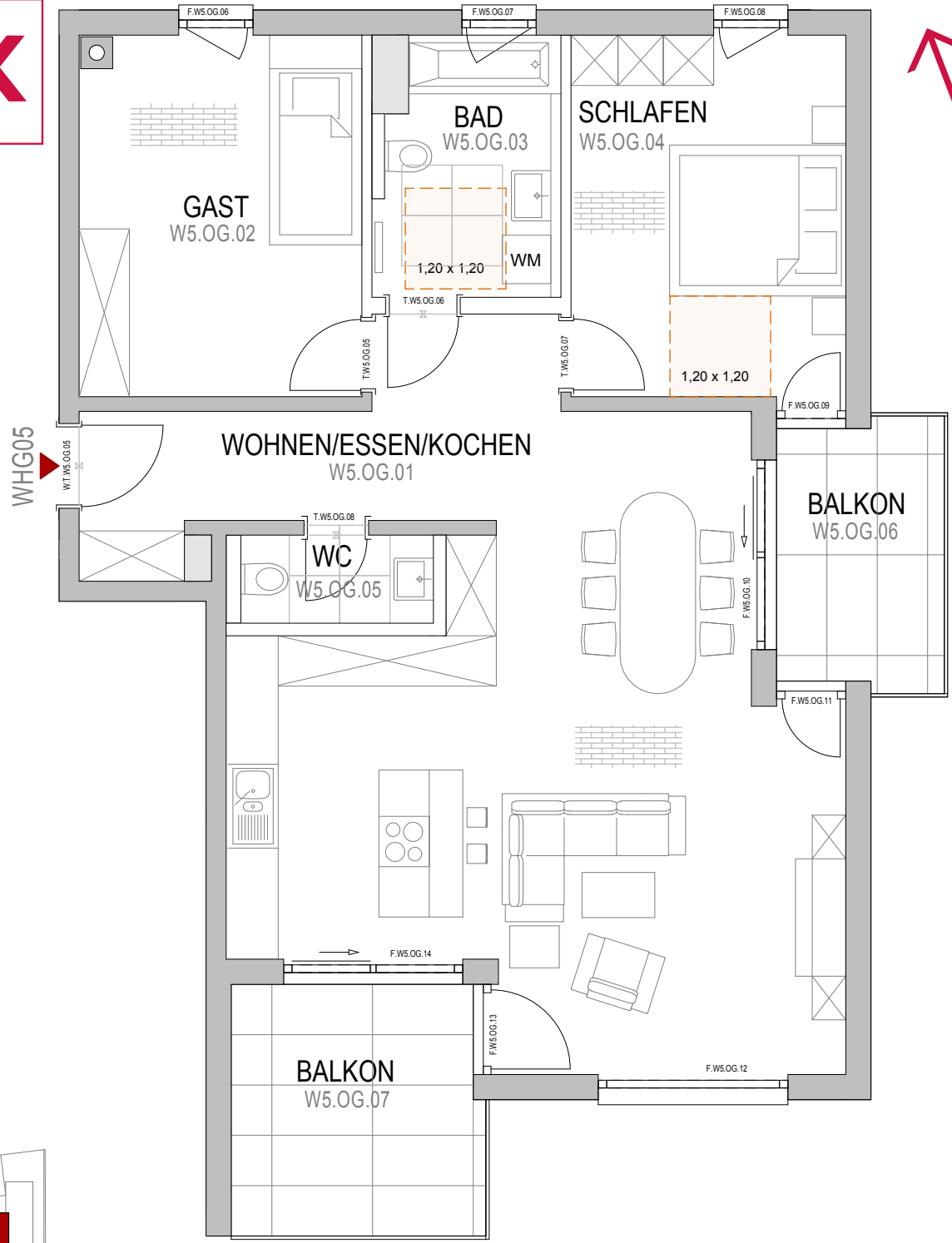
KELLER 5 4,35 m²

# GRUNDRISS - WOHNUNG 5



( ) = Fläche Zubehörräume (F-ZBR)

Berechnung der Wohnfläche (WFL) nach Wohnflächenverordnung WoFlV:2004-01 |



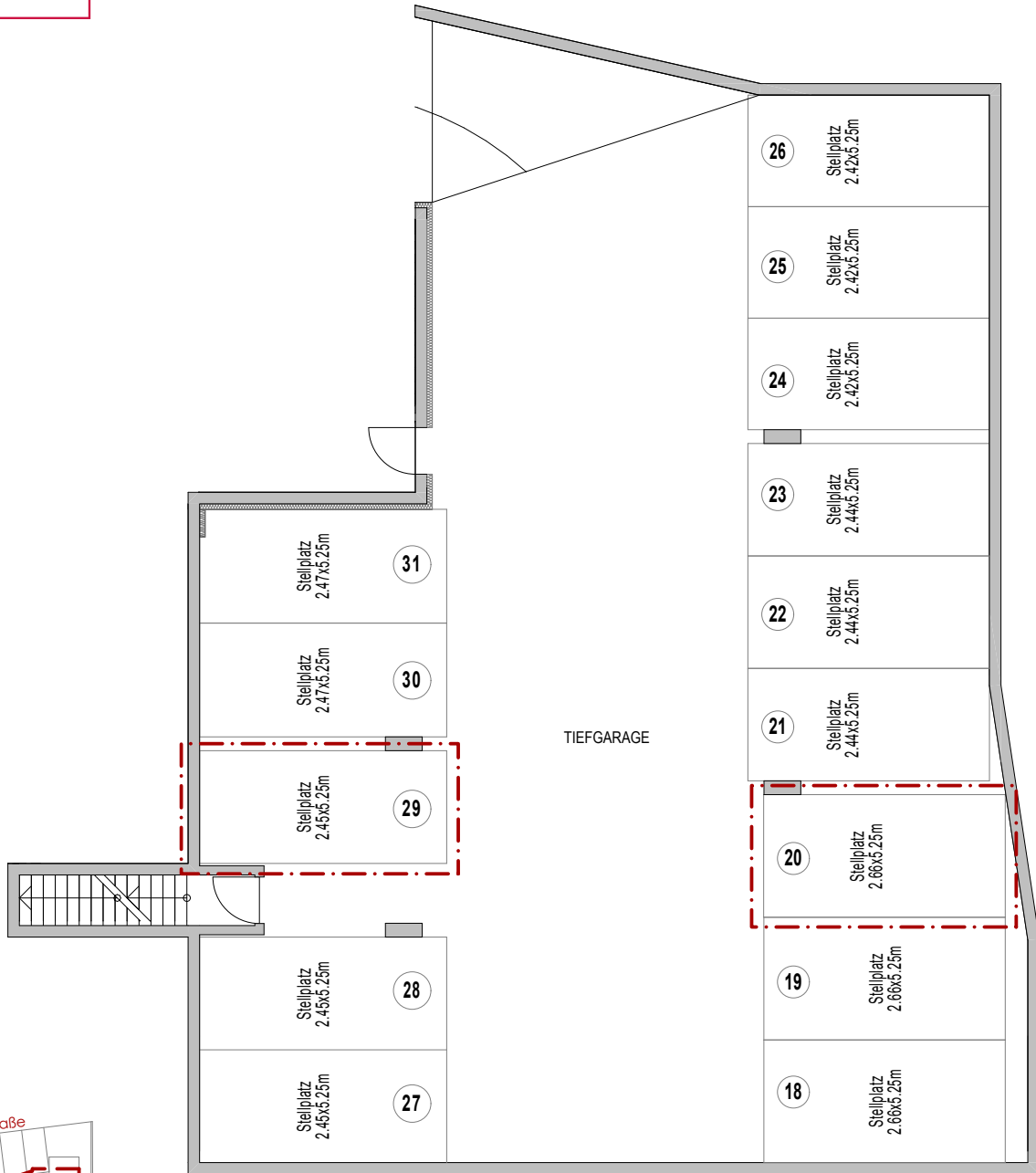
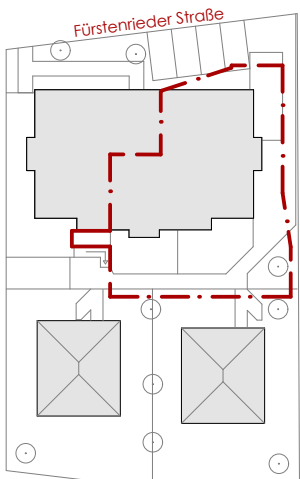
## OBERGECHOSS (WHG 05 - barrierefrei)

GAST	14,16 m <sup>2</sup>
WC	2,37 m <sup>2</sup>
BAD	6,52 m <sup>2</sup>
SCHLAFEN	13,95 m <sup>2</sup>
WOHNEN/ESSEN/KOCHEN	51,51 m <sup>2</sup>
BALKON OST 50%	3,20 m <sup>2</sup>
BALKON SÜD 50%	4,49 m <sup>2</sup>

## GESAMTFLÄCHEN (WHG 05)

WFL GESAMT 96,20 m<sup>2</sup>

ca. 96,20 m<sup>2</sup> WFL



2. UNTERGESCHOSS