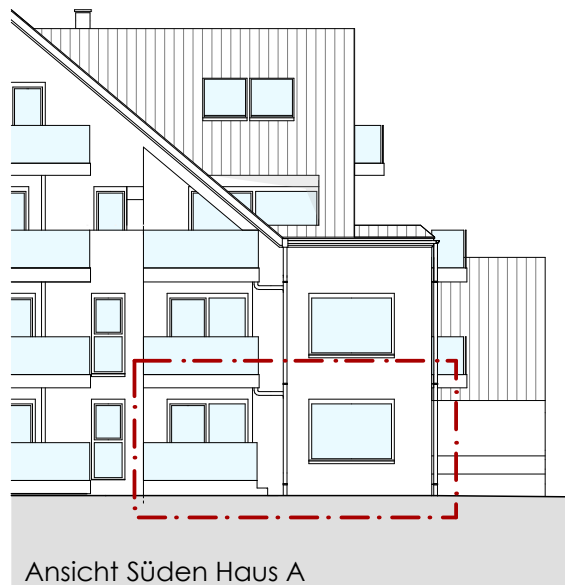
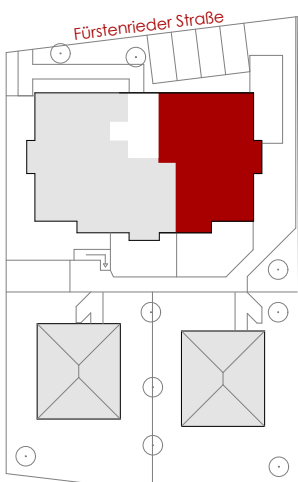
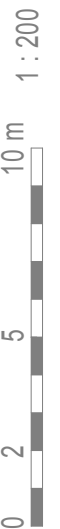
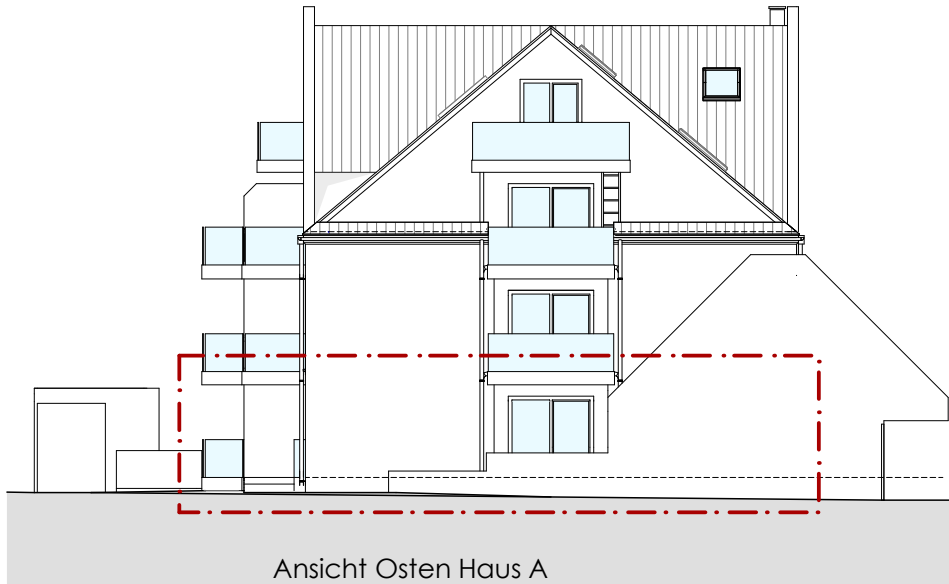
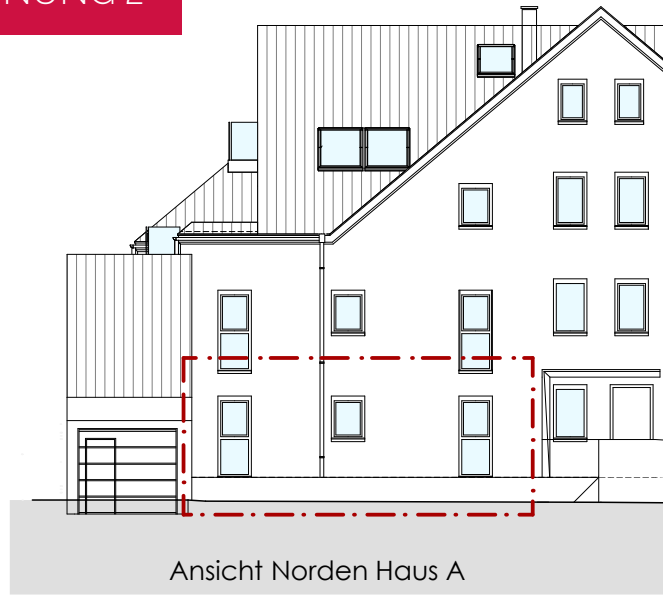
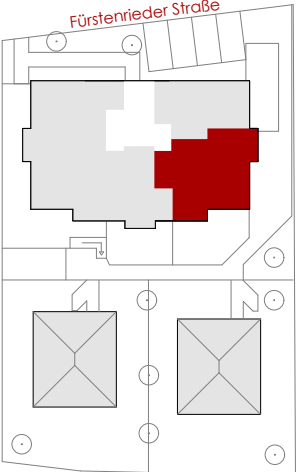
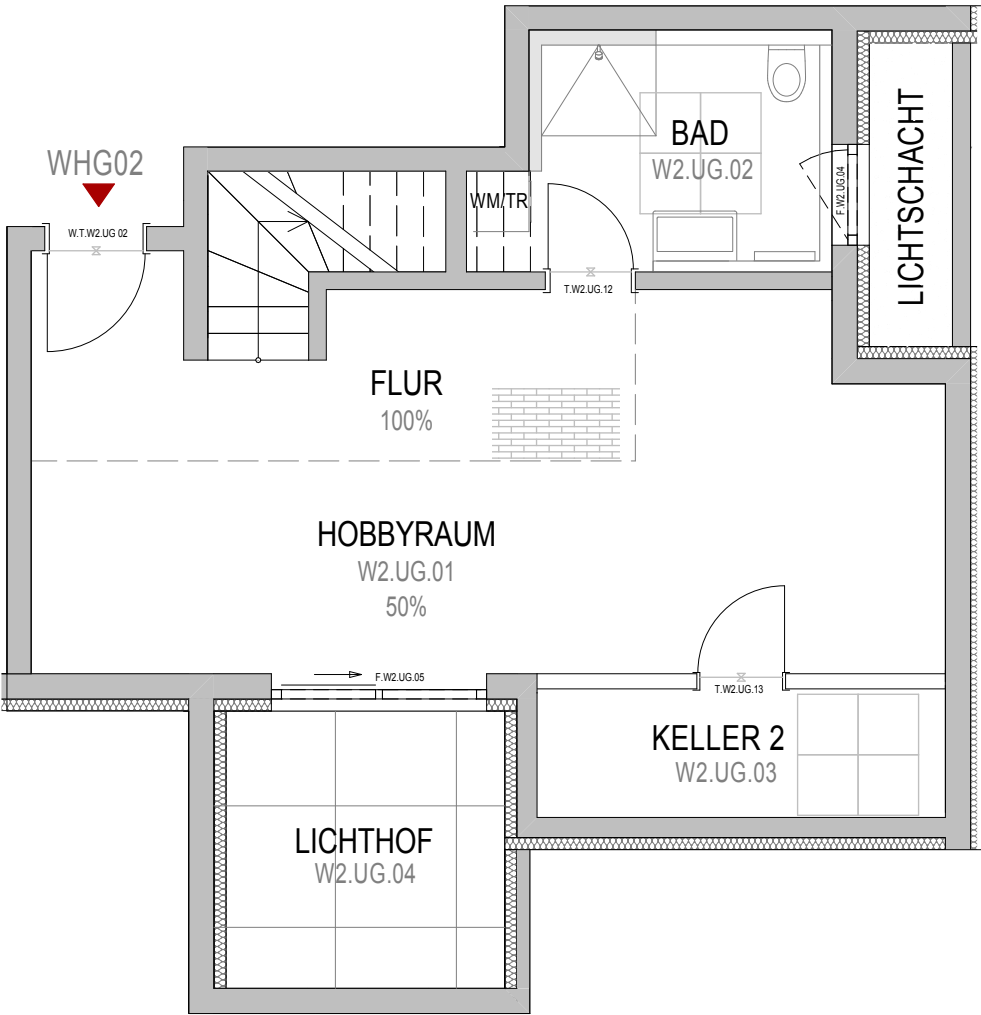


# ANSICHTEN - WOHNUNG 2



Berechnung der Wohnfläche (WFL) nach Wohnflächenverordnung WoFlV:2004-01 | ( ) = Fläche Zubehörräume (F-ZBR)



UNTERGESCHOSS (WHG 02 - barrierefrei)

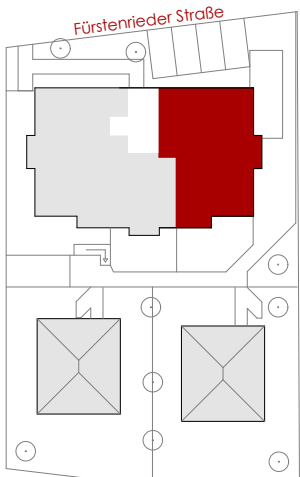
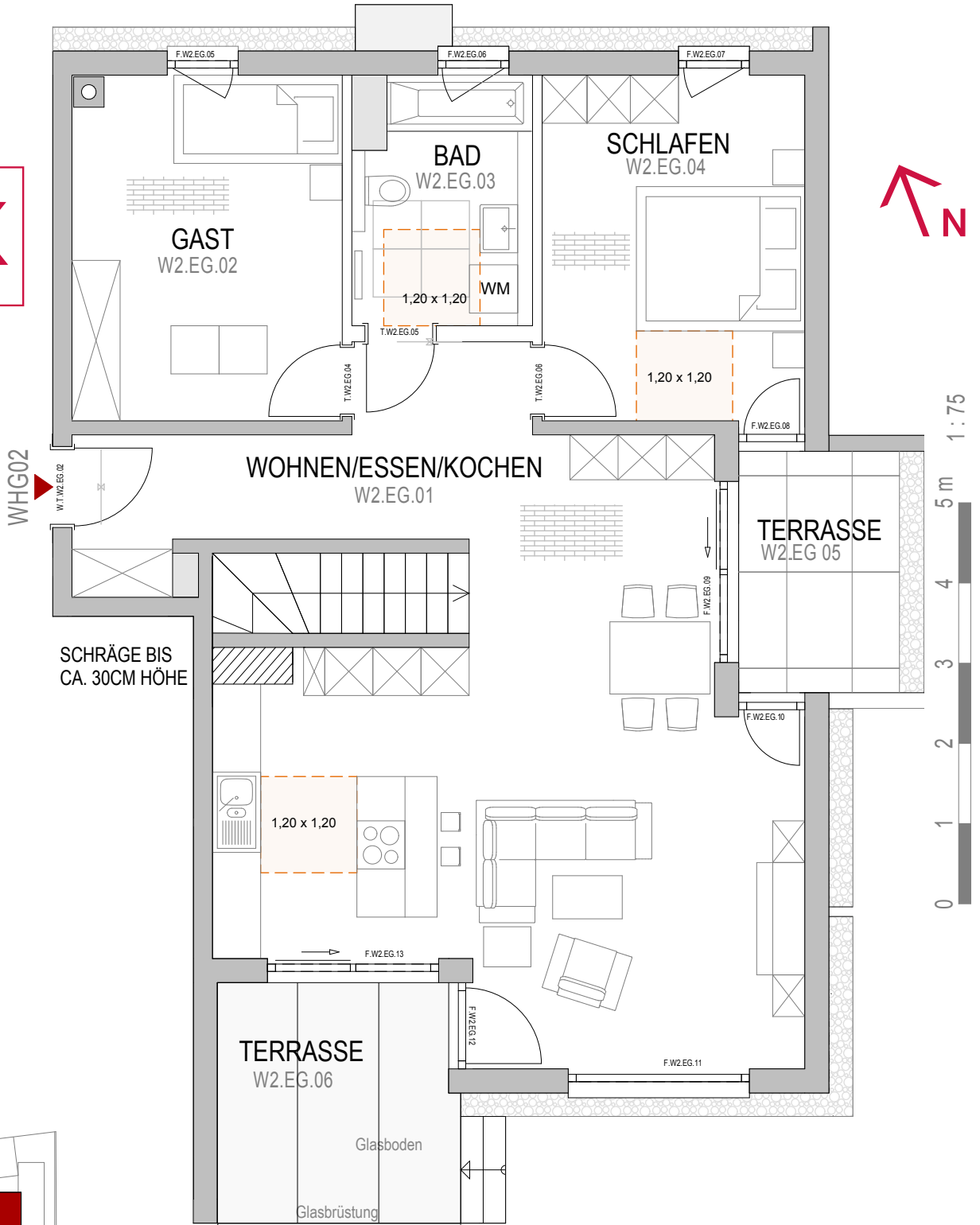
KELLER 2	(5,15) m <sup>2</sup>
FLUR BAD	6,35 m <sup>2</sup>
BAD	7,03 m <sup>2</sup>
HOBBYRAUM 50%	13,15 m <sup>2</sup>

ca. 26,53 m<sup>2</sup> WFL

# GRUNDRISSSE - WOHNUNG 2

( ) = Fläche Zubehörräume (F-ZBR)

Berechnung der Wohnfläche (WFL) nach Wohnflächenverordnung WoFIV:2004-01 |



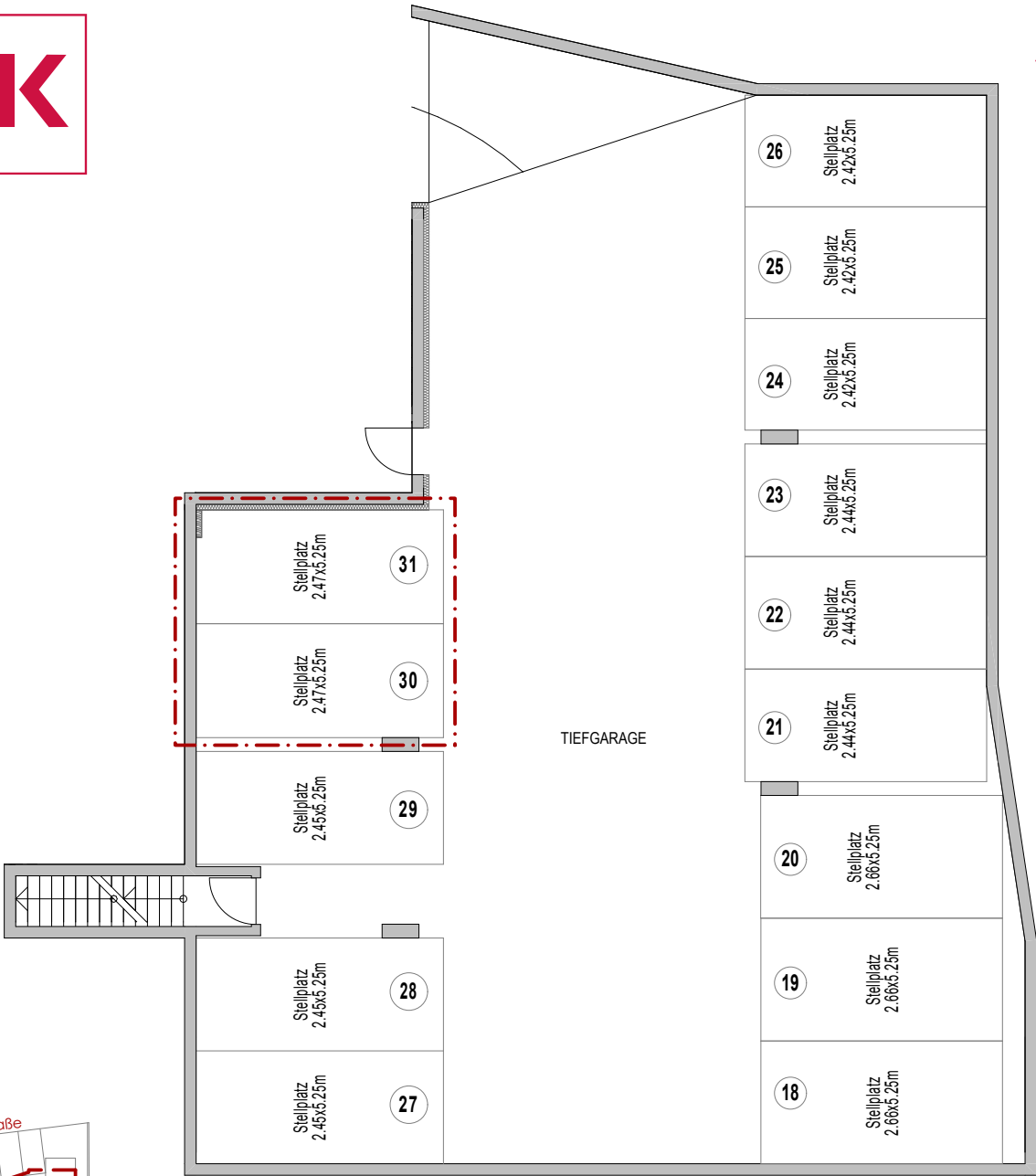
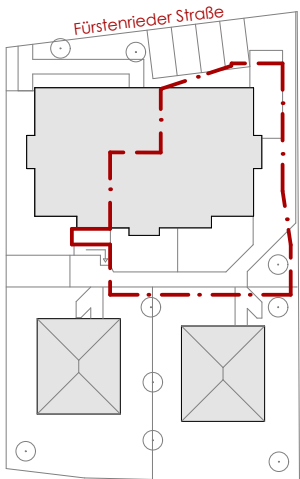
## ERDGESCHOSS (WHG 02 - barrierefrei)

GAST	14,16 m <sup>2</sup>
BAD	6,52 m <sup>2</sup>
SCHLAFEN	13,54 m <sup>2</sup>
WOHNEN/ESSEN/KOCHEN	50,56 m <sup>2</sup>
TERRASSE OST 50%	3,35 m <sup>2</sup>
TERRASSE SÜD 50%	4,37 m <sup>2</sup>

## GESAMTFLÄCHEN (WHG 02)

WFL GESAMT 119,03 m<sup>2</sup>

ca. 92,50 m<sup>2</sup> WFL



2. UNTERGESCHOSS